



#pelasgoshomes

Elegant, eco friendly

Modular Houses



We was the first and steel are best company which build steel frame houses!

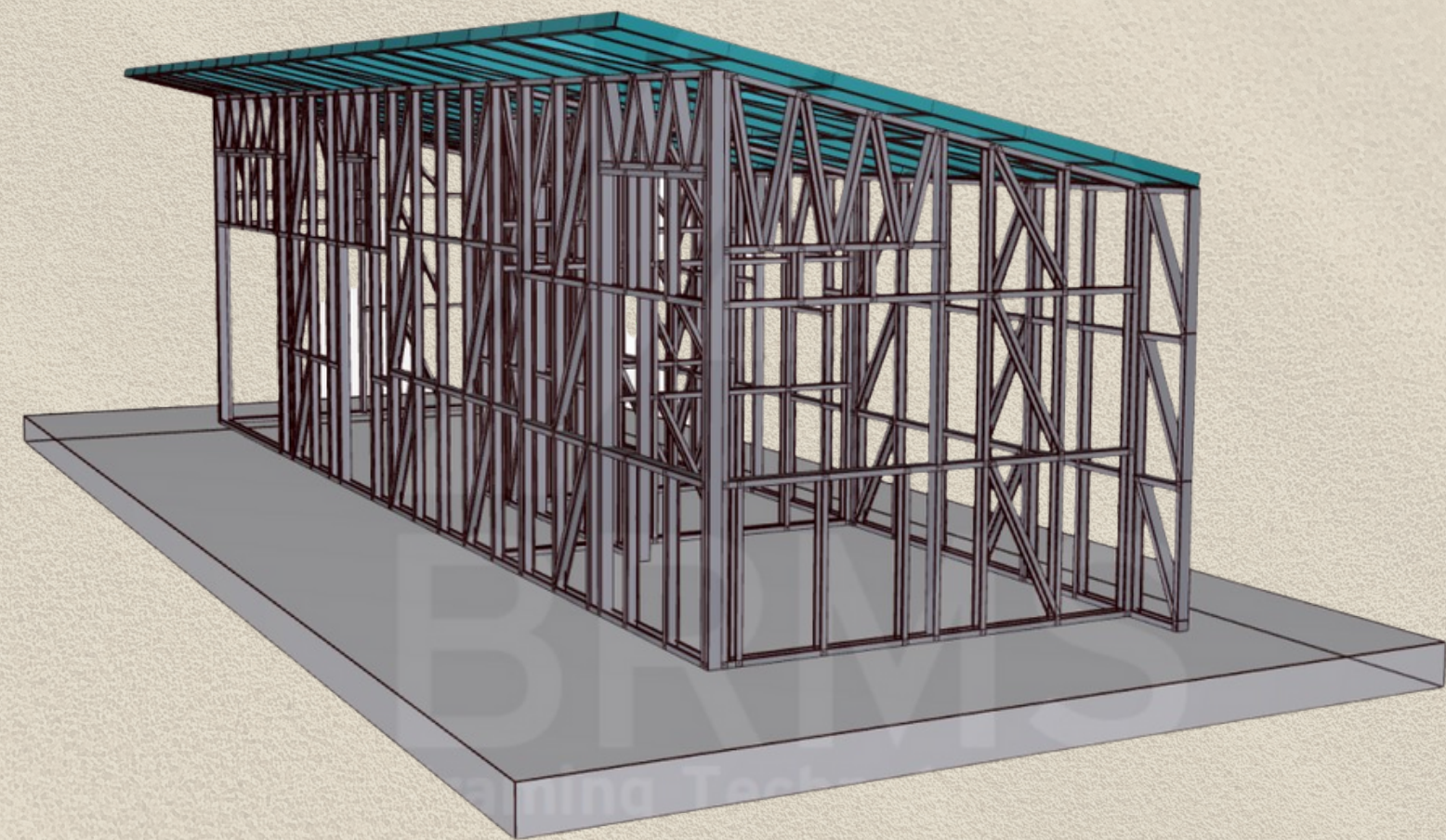
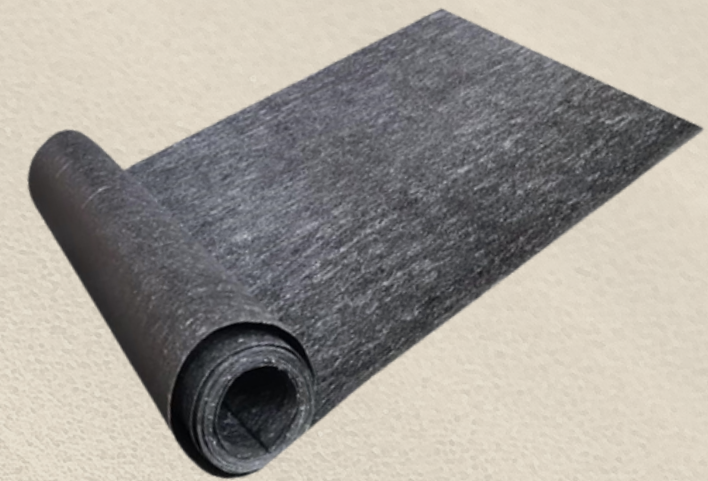


◆ About Us

- Pelagos Homes company specializes in the field construction of prefabricated steel frame houses in Cyprus
- to offer a quality of building ensured by our team of professionals
- also present the idea of an alternative choice of construction

Skeleton of the construction

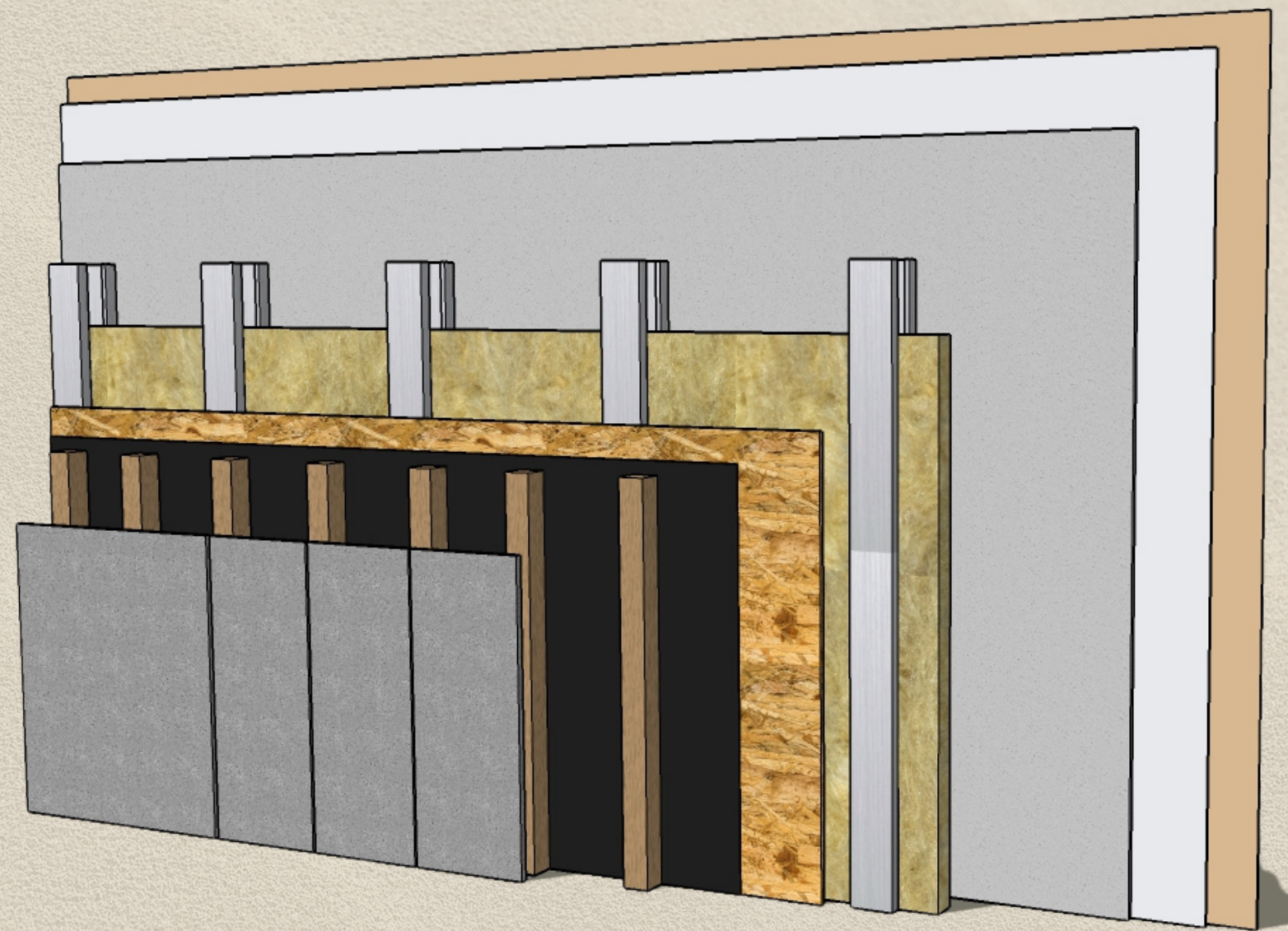
- steel is the most durable construction materials and more important is not new in construction offering you an absolutely safe choice as a building method.
- designed as an easy bolt together system - using load bearing STEEL FRAME COLUMNS AND BEAMS.
- Underneath the metal frame we apply a BITUMEN FELT 2mm
- Base for the floor 100/50/3 mm each 50 cm



Exterior walls

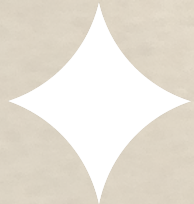
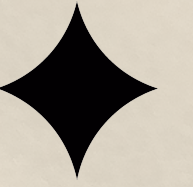
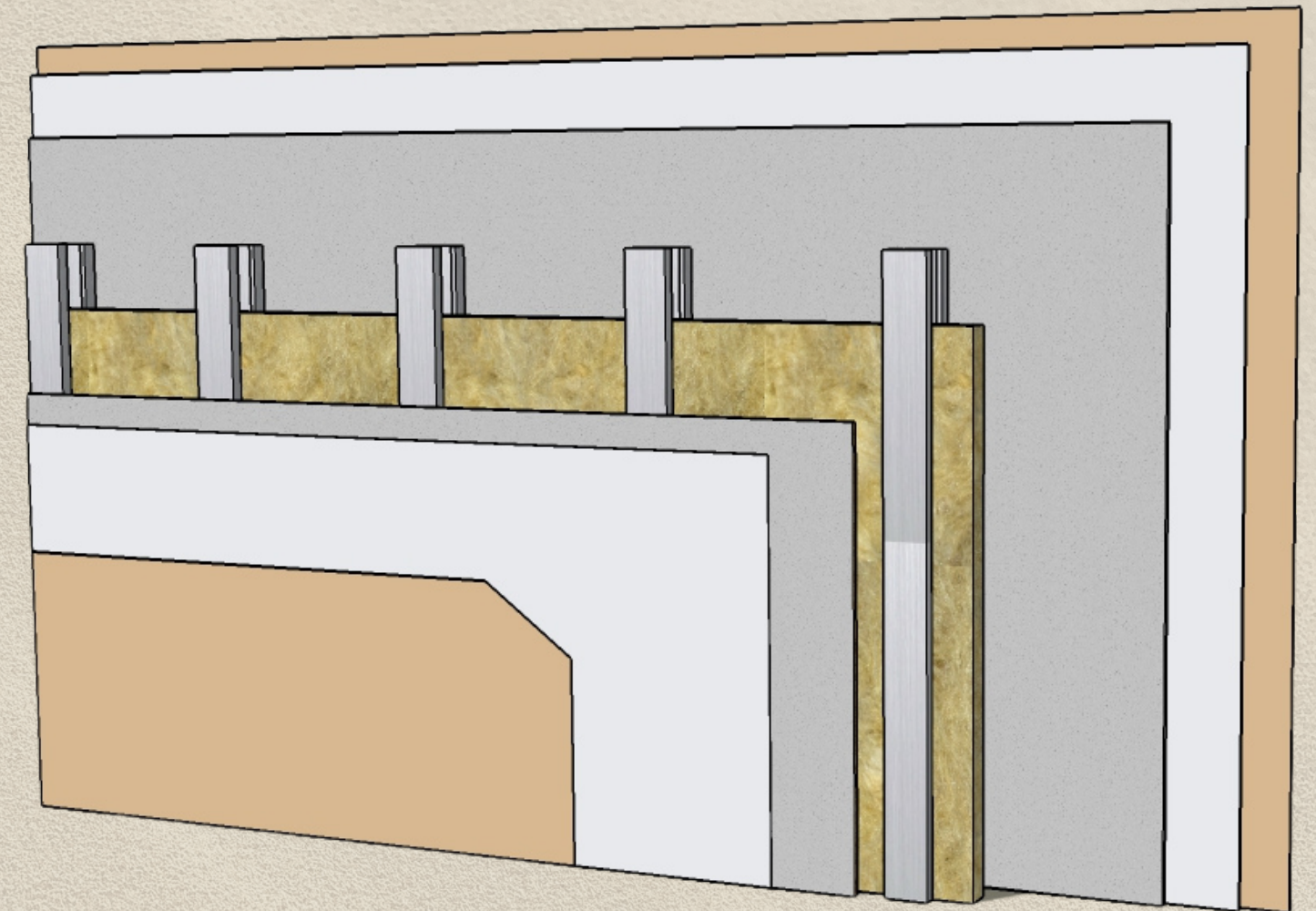
*from inside to outside

- Ultra board Knauf 12 mm thickness
- Steel frame structure 9 cm
- Between the metal structures we install a layer of 5 cm rock wool, ensuring THERMAL and SOUND INSULATION.
- OSB 11 mm
- Vapor membrane Delta vent
- Omega channels ventilated facade
- Fiber cement panels 0,8 mm and fiber cement Wooden look panels 0,8 mm



Interior walls

- Ultra board on both sides
- All interior connections are finished with Uniflott by KNAUF
- Steel frame structure 9 cm
- Inside the metal skeleton we use rock wool insulation 5 cm layer for THERMAL and SOUND INSULATION.
- Stabilizer
- 3 layers of Paint



Roof structure



OSB 11 mm



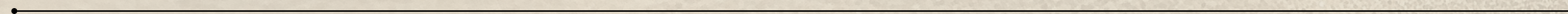
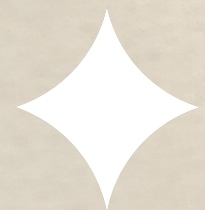
Water mambrane



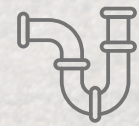
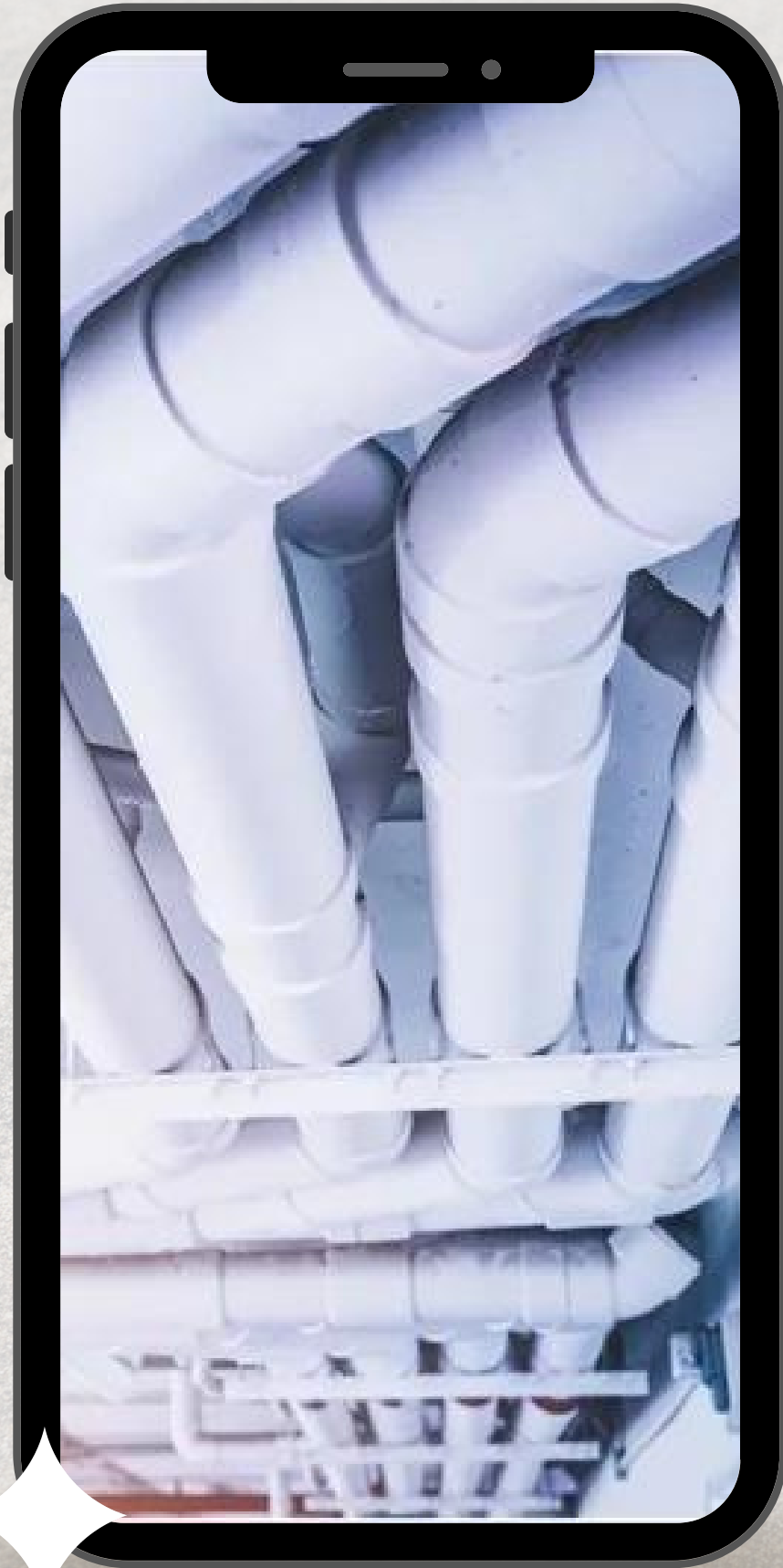
Omega chanel



Metal sheet panels



Plumbing installation



Standard polypropylene tubes are built in the walls (pipe-in-pipe with rubber of German origin)

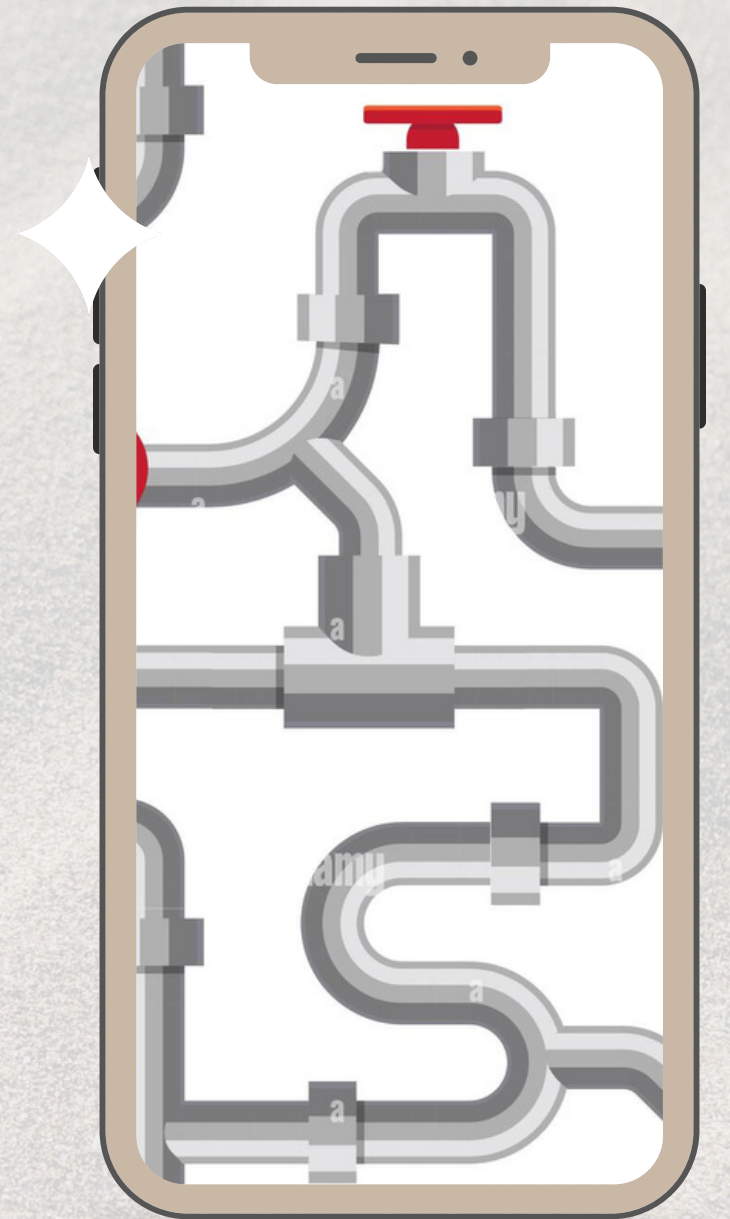


Plumbing system for 4 points:

- shower
- toilet
- sink
- kitchen



our cost includes the installation of all sanitary and accessories. System are tested and propose a guarantee.



Electrical installation



the electrical installation will be single-phase

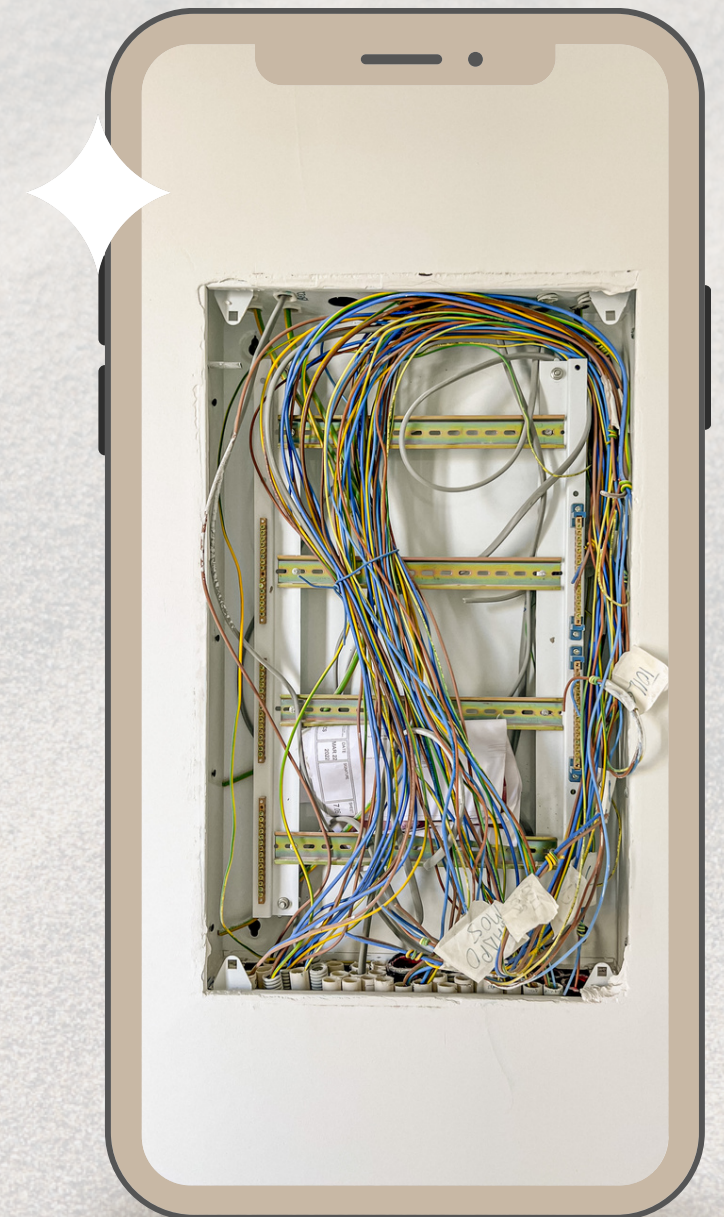


Switches and sockets included are:

- 2 double sockets for each room
- 2 light and switch provisions
- 2 exterior lights
- 2 external sockets



Electrical installations are made in accordance with the requirement of AHK.

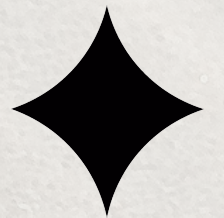
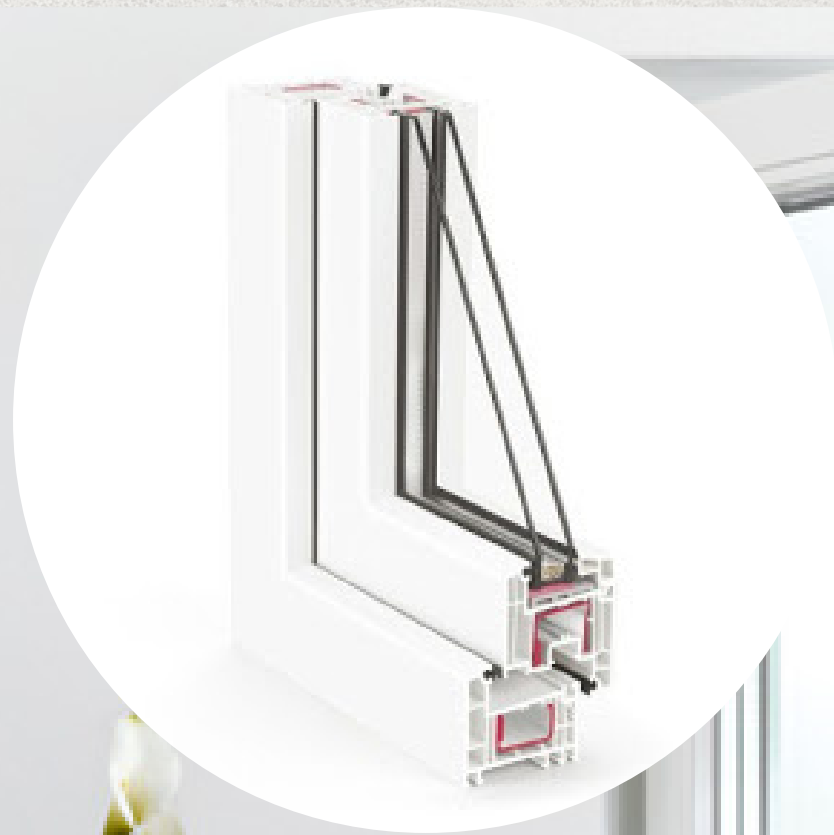


Finishing works

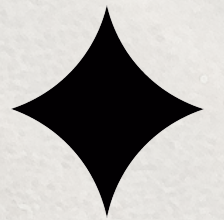
PVC Windows



4 chambers PVC windows of dark grey, beige or white, based on the designs/plans



Finishing works



Interior doors



- Interior doors laminated
(handles 20 euro)
- Exterior entrance door "UPVC"
(handles 60 euro)

Finishing works



Facades



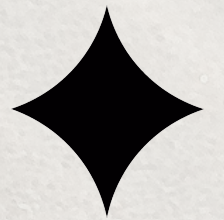
Fiber cement panels in different colors

Finishing works

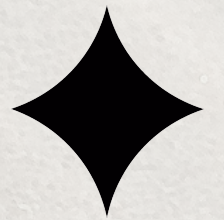
Internal flooring



Laminate Parquet / Origin Germany



Finishing works

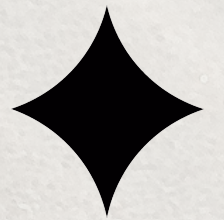


Bathroom



All sanitary fittings and accessories for the bathrooms

Finishing works

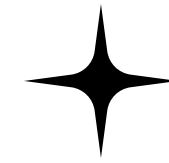
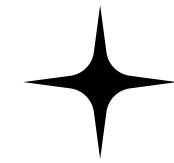
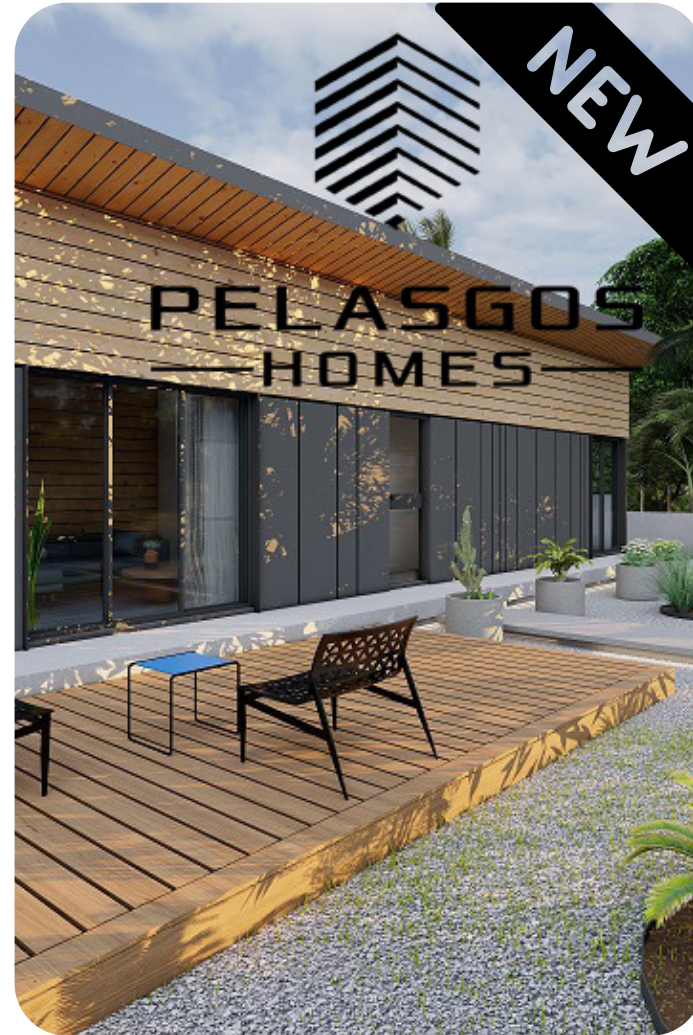


Kitchen



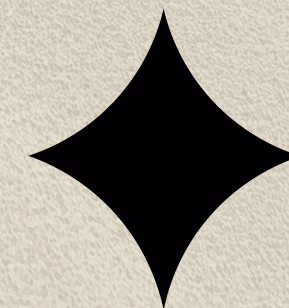
Kitchen cabinets melamine with a
laminated worktop
(handles 3 euro)

Our Pricelist



Modular
house

starting price 850 €





Thank You

Thank You for Attention to Us



+357 25 10 72 20 | info@pelasgoshome.com | www.pelasgoshomes.com